

***The Connection!***  
***The undersea Volcano east of Italy.***  
***The Popocatepetl/white lady Volcano,***  
***and The Big California earthquake.***

McKana. May 28, 2024.

***Isaiah 13:9-11(KJV)***

***9 Behold, the day of the LORD cometh, cruel both with wrath and fierce anger, to lay the land desolate: and he shall destroy the sinners thereof out of it.***

***10 For the stars of heaven and the constellations thereof shall not give their light: the sun shall be darkened in his going forth, and the moon shall not cause her light to shine.***

***11 And I will punish the world for their evil, and the wicked for their iniquity; and I will cause the arrogancy of the proud to cease, and will lay low the haughtiness of the terrible.***

---//---

The Lord is good in telling us events much before they happen. When the events start, we know it is going to be one after the other or overlapping until the righteous indignation of the Lord is satisfied. In all this, the Lord has given us two options, to face what comes or to repentance for mercy by which what was prophesied might be lightened or totally forgiven like Nineveh.

As all of us are following the messages from the Lord and watching the prophetic events coming to pass, it is human nature to question, when, when, when. We learned through time, the Lord speaks through events. What proceeds what events and what follows an event is up to us humans to ponder upon and figure out for closer understanding. Even when the prophetic message are given, we know in part and we prophesy in part. The next few words are connections of many prophetic messages given to many true messengers.

We are given the word of the Lord one piece here and another there. One point of understanding is, the Lord didn't give us the sequences. One example is the Atlantic Meteor. As to what was given to me, the revelation of the big earthquake came first followed by the Atlantic mountain high tsunami, the revelation of the meteor and the other events following came later at the end.

We have warned much about many cataclysmic events coming to the world. This last message encompasses a short summary and the connections of the three events mentioned in the title above.

What is the connection between these three events:-

- I. The under the ocean volcano in Italy
- II. The Popocatepetl/white lady Volcano and
- III. The big California earthquake.

***I. The Under the ocean volcano in the east coast of Italy.***

On May 20, 2024 .There was 4.4 earthquakes in the Campi Flegrei area near Naples, Italy.

More concerning is what the Lord has been warning us about the undersea volcano when it erupts will bring big tsunami to the shorelines and the inland in the area.

There are many prophetic words about the massive eruption which occur under the sea(See reference at the end). Let us see the first connection.

***A. The volcano-First Italy then Mexico.***

This is what was given to Noel-Castillo.

“I was on a trip with my brother. It looked like a very nice place. We got in the car and headed off to our unknown destination. I started driving, and we had a nice view of what looked like a big mountain. Suddenly, we saw ***a huge cloud of ash, it was colossal, I saw the cloud of ash elevating way high in the sky. It was a volcano erupting.*** My brother asked me to turn back since we were heading towards the eruption.

When I was turning back and looking for shelter, The Spirit of God said; **first Italy then Mexico. I have felt in my spirit that both nations will be greatly affected by volcano's eruptions.** This will be a means of judgment the God Almighty will use, for numerous are their abominations and blasphemies against Him. Full of idolatry, sorcery and witchcraft, human trafficking, and sexual perversion. The LORD has been asking for repentance, but they refuse to hear.”

<https://444prophecynews.com/first-italy-then-mexico-also-floods-in-philippines-noel-castillo/>

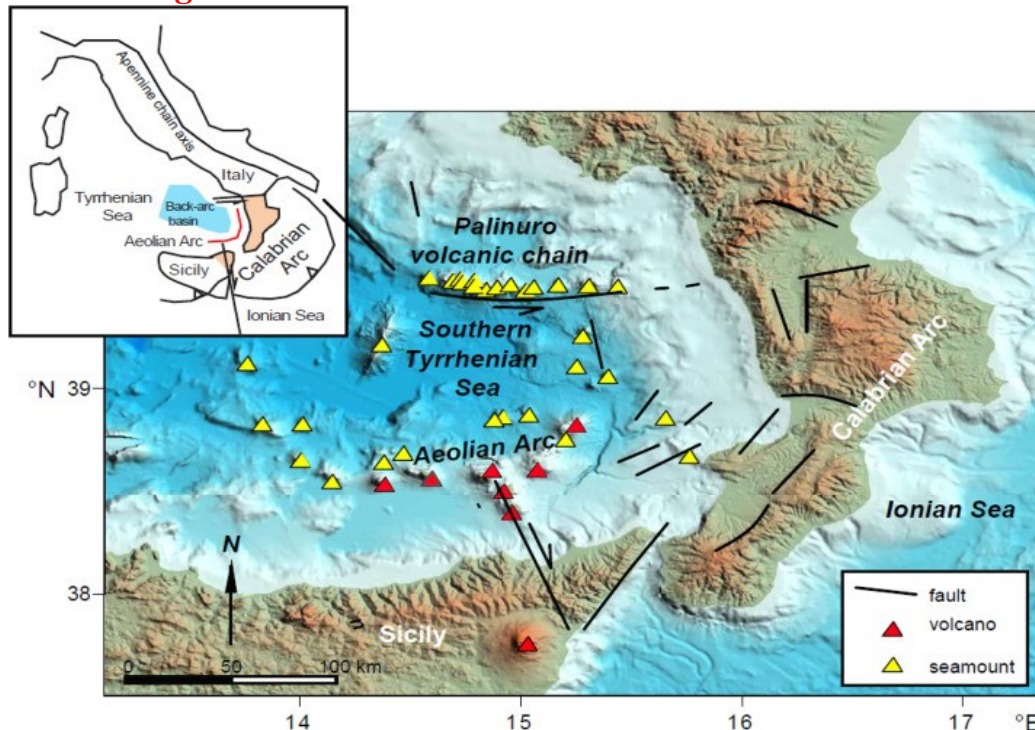
### ***B. The Tsunami following the huge eruption of the undersea volcano***

This is what is revealed to *Isaac Gyamerah*.

“In a dream, I was in the cities of Italy. I was closer to some of Rome’s most prominent tourist attractions. Suddenly, there was a massive flood that swept across the cities, including the tourist attraction I saw in the dream. I witnessed individuals fleeing for their lives. In the dream, I saw the Lord protecting His children from the impacts of the tsunami. Even though they were surrounded by the large flood, the water did not touch them. MAY GOD GIVE US THE GRACE TO STAND IN JESUS NAME. AMEN!!!!!!”

<https://444prophecynews.com/tsunami-to-hit-italy-isaac-gyamerah/>

### ***C. The Geological science.***



Abstract

***“The Palinuro volcanic chain (PVC) is located about 80 km offshore the Campania region (Italy) in the southern sector of the Tyrrhenian Sea. The chain consists of 15 volcanic edifices aligned in an E-W direction with two distinct major seamounts (Palinuro and Glabro). They cover a 90 km long and 20 km wide area, with a present-day volume of 2700 km<sup>3</sup>. Palinuro volcanism emplaced between 0.8 and 0.3 Ma, although shallow seismicity and hydrothermalism indicate an ongoing volcanic activity.*** A geomorphological analysis of the volcanic chain and data from a multichannel ***seismic profile reveal large volumes of buried chaotic material suggesting gravity mass sliding from the volcano flanks and slide scars.*** A stability analysis of the Palinuro flanks has been carried out to determine the sectors potentially prone to sliding in case of shallow volcanic earthquakes. Landslides are simulated by adopting a scenario-based approach. Tsunamis induced by these mass movements and their propagation across the Tyrrhenian Sea are modeled. Results suggest that shallow earthquakes ( $M \sim 4.6-4.8$ ) are able to destabilize the flanks of the volcanic chain generating slope failures.

Sliding volumes in the order of 1.5 km<sup>3</sup> and 2.4 km<sup>3</sup> may induce waves as high as 1.5 and 6 m, respectively, along the peri-Tyrrhenian coast. Our results underline *the need for further investigations* on the stability of *the submarine volcanoes of the Tyrrhenian basin*. These volcanoes are still poorly known although *their instability could trigger large tsunamis along the southern Italy coastal sectors*. Our recommendation is that *multiparametric monitoring networks on PVC and periodic oceanic cruises should be put into action*, and further that a systematic evaluation of the *tsunami hazard* related to possible sliding phenomena on the flanks of the Tyrrhenian seamounts should be performed.”

<https://www.sciencedirect.com/science/article/pii/S0377027320303401>

## ***II. The Popocatepetl and the Iztaccíhuatl (The white lady) Volcano.***

We have posted a number of Messages about Popocatepetl and the White lady volcano in Mexico. Popocatepetl volcano is smoking for over two years.

### ***A. Iztaccíhuatl(The “sleeping princess”) Volcano will reawaken.***

“When I read that Iztaccíhuatl was long dormant, with no historic record of eruption in the last 11,000 years, I wondered how this volcano could become possibly active again. But the Holy Spirit said, *“Iztaccíhuatl will reawaken—and shake with fury.”* So this is *a warning for communities in the vicinity to cautiously prepare for such an eruption*, even though there are not yet strong signs of one to come. *The “sleeping princess” volcano will indeed awaken.*”

<https://444prophecynews.com/mexicos-sleeping-princess-volcano-will-awaken-anno-domini-144k/>

### ***B. Iztaccíhuatl volcano erupt(The White Lady/The Sleeping princess volcano)***

(Vision of August 1, 2023. 1:30AM)- “I just went to bed and I see a vision. First I see Popocatepetl volcano, then the one north to it the Iztaccíhuatl (locally known as-the White Lady) volcano. There is some smoke on the Popocatepetl then the next volcano to the north, the volcano Iztaccíhuatl (the White Lady) erupted and started throwing lava all around. It is not a big and smoky eruption like popo but lava is splashing out in all direction. In a fast vision, I saw the Iztaccíhuatl volcano erupt. In this vision, the red flaming splash of lava in all direction from the multi-mouth volcano tells that the eruption occurs either early in the morning or early in the evening, not at night or daylight for I can see both volcanoes in dim lighting.”

<https://444prophecynews.com/the-volcano-north-of-popocatepetl-iztaccíhuatl-the-white-lady-volcano-erupted-mckana/>

## ***III. The big California earthquake.***

### **California**

“The first early warning signs from the Lord concerning the major earthquake of California is the eruption of the Popocatepetl volcano in Mexico. March 26, 2021 is “Day 21” since Popocatepetl started erupting. The prophecy tells us *“The volcanoes will erupt. There will be a massive eruption of Mt. Popocatepetl. When the smoke clears Mexico City will be no more. Be warned that when this earthquake happens it is the final warning sign for the coming Great West Coast Earthquake.”*”

<https://444prophecynews.com/warning-as-popocatepetl-volcano-is-for-california-the-flood-in-south-wales-is-for-australia-mckana/>

### ***Early warnings and signs!!! Before the great West cost/California quake:-***

1. There would be a mass migration out of Mexico and other Central American countries. This has started but it will finally reach millions streaming north.(This has come to pass, it is happening now)
2. The crust of the planet along the western margin of Central and North America will begin to break up before this quake, because of early effects of the incoming Destroyer. (Wormwood/Nibiru).
3. The 4.8 magnitude earthquake outside of Las Vegas, where the water of *Lake Mead* is draining into the earth, is a clear indication that this has started.
4. ***A massive earthquake is coming to Mexico City.*** During this quake large areas of the world’s biggest city will be swallowed up and millions will die.

5. ***The volcanoes will erupt. There will be a massive eruption of Mt. Popocatepetl.*** When the smoke clears Mexico City will be no more. Be warned that when this earthquake happens it is the ***final warning sign for the coming Great West Coast Earthquake.*** (This happening right now)

6. ***The Northwest will be first. The 9.1 quake will shake Washington State and Oregon with fierceness. Within 24 hours follows the big one.***

7. At the end

-The birds will disappear.

-A small Earthquake, 30 minutes before the big one.

-The smell of Sulfur from the ground. -A tidal wave from the Pacific.

8. ***And the great strong shaking of 12.2 quake will break California apart:-*** -1,000 miles from South to the North, 200 miles deep into the inland, -400 deep everything from the San Andrea's Fault westward would fall into the ocean Repent.

[https://444prophecynews.com/wp-content/uploads/2021/03/Early\\_warnings\\_for\\_California\\_-\\_May\\_13\\_2023.pdf](https://444prophecynews.com/wp-content/uploads/2021/03/Early_warnings_for_California_-_May_13_2023.pdf)

### ***Conclusion***

The most devastating volcano is the volcano which erupts under the sea, east of Italy. This eruption triggers a massive tsunami which goes further inland.

Following Italy is the eruption of the volcanoes in Mexico leading to what has been prophesied about California. It Goes-***Italy, Mexico followed by California.*** This is what is revealed to us. In all cases the Lord is the ultimate authority.

The three regions are warned and the big warning is, when the Global earthquake starts, many volcanoes in different continents, the active, the dormant and the unknown will erupt at the same time to engulf the regions with devastating fire.

Focus not on the events. Focus on the Lord and Repent before it is too late.

More Testimonies.

**May 27, 2024**

***Big volcanic eruption in the east coast of Italy, starts a huge tsunami which goes inland,***

WARNING What the Lord showed me about Italy's volcano is coming to pass [Last Day](#)

<https://www.youtube.com/watch?v=zaaGhutoKz4>